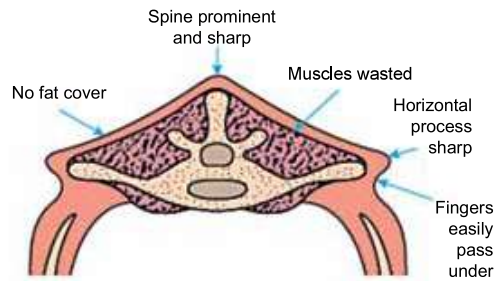


GOAT BODY CONDITION SCORE

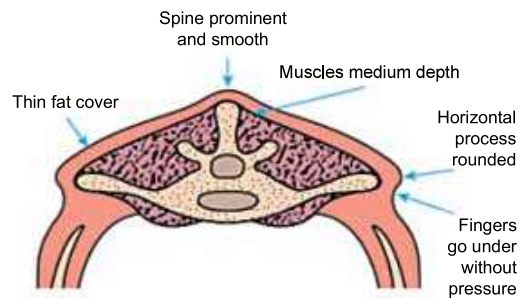
BCS 1 = Very thin

- the goat looks emaciated (thin)
- weak with backbone highly visible, hollow flank and clearly visible ribs
- no fat cover and your fingers can penetrate spaces between ribs
- sternal fat easily grasped between thumb and fingers and moved from side to side



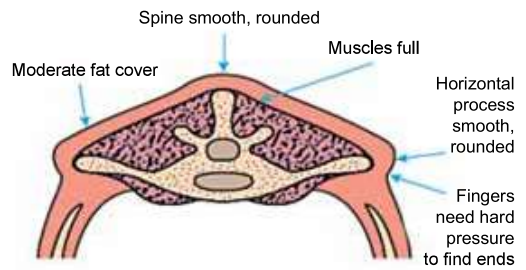
BCS 2 = Thin

- slightly better, but the goat still looks bony (slightly thin)
- backbone is visible with a continuous ridge and ribs can be seen and felt
- only a small amount of fat cover
- sternal fat wider and thicker than BCS1, but can still be grasped and lifted



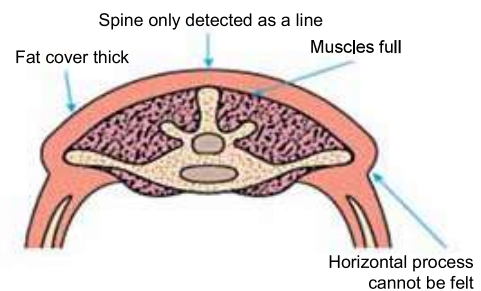
BCS 3 = Normal

- backbone is not prominent
- even layer of fat covers ribs
- thick tissue layer covers vertebrae
- sternal fat is wide and thick. Can be grasped, but has little movement



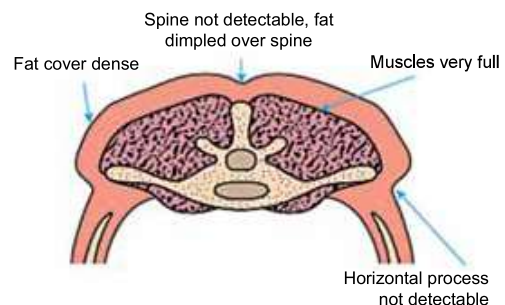
BCS 4 = Fat

- side is sleek in appearance
- backbone and ribs cannot be seen
- cannot grab hold of spinous processes
- sternal fat difficult to grip



BCS 5 = Very fat

- backbone is buried in fat
- ribs not visible and covered with excessive fat
- reference marks on spinous processes are lost
- sternal fat extends and covers sternum, and cannot be grasped



GOAT BODY CONDITION SCORE

AH.1 Locomotion Score

| Score | Category | Locomotion description | Action |
|-------|------------------------------|---|--|
| 0 | Good locomotion | Walks using all four feet with a flat back. Rhythm of stride and bearing of weight should be even. Long, fluid strides possible. | <ul style="list-style-type: none"> ■ No action needed ■ Routine preventative care (foot trimming) ■ Record locomotion at next scoring session |
| 1 | Imperfect locomotion | Uneven rhythm and bearing weight or shortened strides. Affected limb/limbs not immediately identifiable. | <ul style="list-style-type: none"> ■ Further preventative care (foot trimming) ■ Additional observation recommended |
| 2 | Impaired locomotion | Uneven weight bearing on immediately identifiable limb/limbs. Noticeably shortened strides, can also detect an arch to the centre of the back. | <ul style="list-style-type: none"> ■ Lameness to benefit from further care ■ Foot to be inspected to establish cause of lameness before additional treatment ■ Action should be taken as soon as practically possible |
| 3 | Severely impaired locomotion | Unable to walk at a brisk human pace or keep up with the healthy herd. Lameness easy to identify; limping, reluctance to stand on lame limb/limbs. Back arched when walking. Very lame. | <ul style="list-style-type: none"> ■ Very lame, requires urgent care and professional advice ■ Examine and treat as soon as possible ■ Goat should not be made to walk far and kept on a straw yard or at grass ■ Consider culling in severe cases |