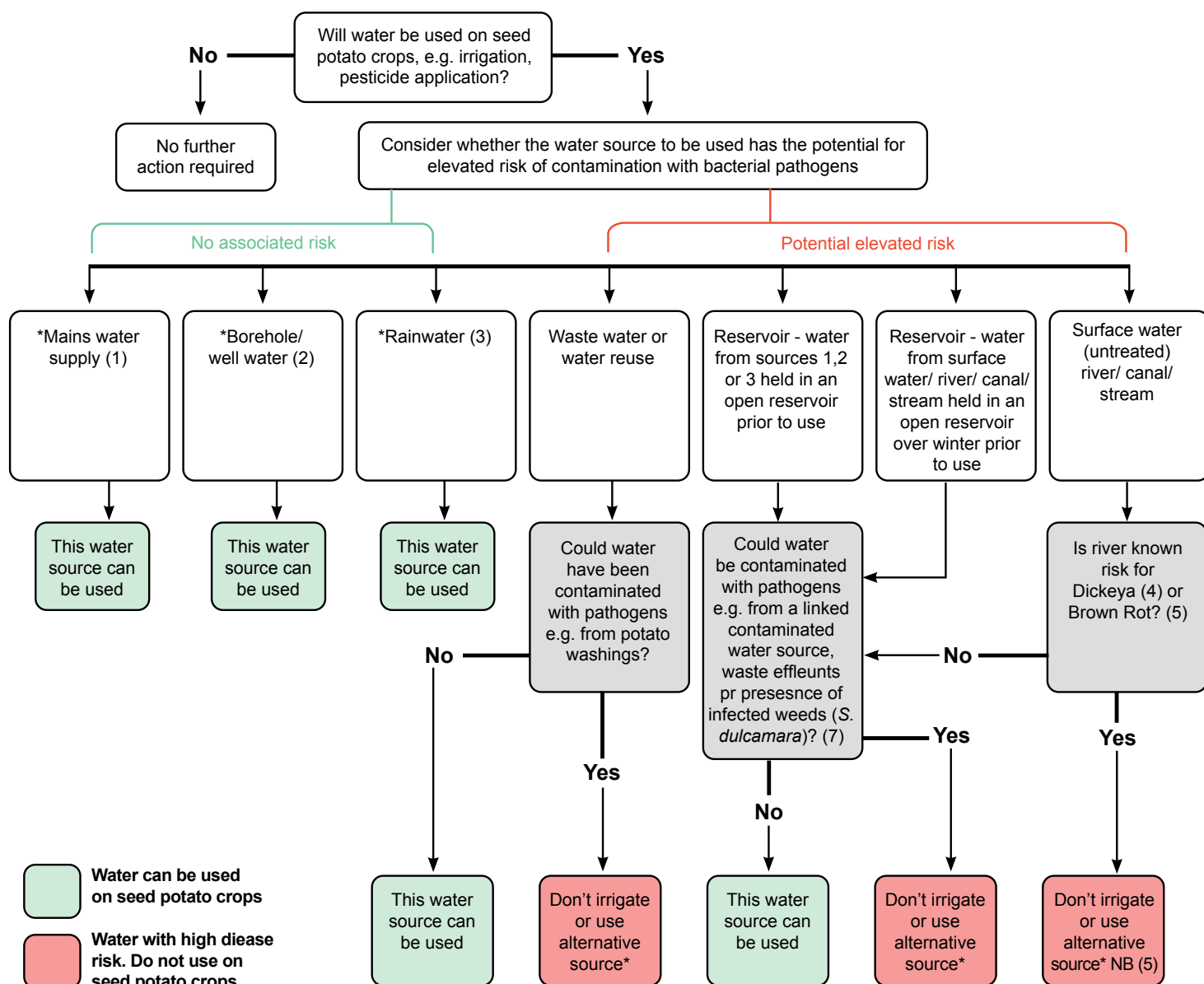


DECISION TREE FOR THE RISK ASSESSMENT OF WATER USE ON A SAFE HAVEN PRODUCTION UNIT



Notes to decision tree for the risk assessment of water for use on seed and ware potatoes on a Safe Haven Assured Production Unit

- Where mains water is stored in an open reservoir prior to use then see point (6)
- Water taken from borehole or well point that is either applied directly to the crops or stored in a reservoir prior to application. Where water is stored in a reservoir see point (6)
- Rainwater (collected from rainwater or snow and sometimes known as rainwater harvesting) captured from building roofs etc.
- No systematic river surveys are carried out for *Dickeya* spp. in England and Wales. Current information from surveys conducted in Scotland may be obtained from: <http://www.gov.scot/Topics/farmingrural/Agriculture/plant/18273/PotatoHealthControls/PotatoQuarantineDiseases/Dickeya>
- Information on brown rot-designated rivers in England and Wales can be found here: <http://www.gov.uk/guidance/plant-health-controls#quarantine-pests>
There are no currently brown rot-contaminated rivers designated in Scotland. Growers considered at risk would be officially notified by Defra or Scottish Government. Please note that it is **illegal** to irrigate solanaceous crops from water sources designated as contaminated with the brown rot bacterium. A Defra Plant Health Factsheet offers more information on potato brown rot in irrigation water <https://planthealthportal.defra.gov.uk/assets/factsheet/irrigation-guidelines-factsheetformat-2017-final2.pdf>
- Water abstracted during winter months (November to March), when pathogen populations are generally below detectable levels, can be stored and used for irrigation the following season, provided the banks of the reservoir/lagoon are kept free from *Solanum dulcamara*. For more information see Defra factsheet in point 5.
- Information on weed hosts for brown rot can be found here: <https://planthealthportal.defra.gov.uk/assets/factsheets/brownrot.pdf>